

# LONG STAY PARTNER RATES

## ABOVE THE ROOFTOPS OF ZURICH

The «All-Suite Boutique Hotel» Rigiblick impresses with its unique view over the city and lake and its spacious and timelessly modern suites (45-90 m<sup>2</sup>) with an open bathroom and a kitchen that can be separated from the living area. Two suites even have their own spa area directly in the room. In the Bistro, hostess Vreni Giger treats her guests to culinary delights with her authentic, regional and seasonal organic cuisine. Despite the quiet location in the natural surroundings, downtown Zurich can be reached in just a few minutes by cable car Rigiblick and tram.

### SUITES

2 weeks  
3 weeks  
4 weeks

from 2'400  
from 3'500  
from 5'000

(45 to 95 m<sup>2</sup>, excl. Spa suites)

Prices are in CHF, including VAT, for single occupancy, excluding breakfast, without parking, with weekly cleaning.



### SORELL HOTEL RIGIBLICK

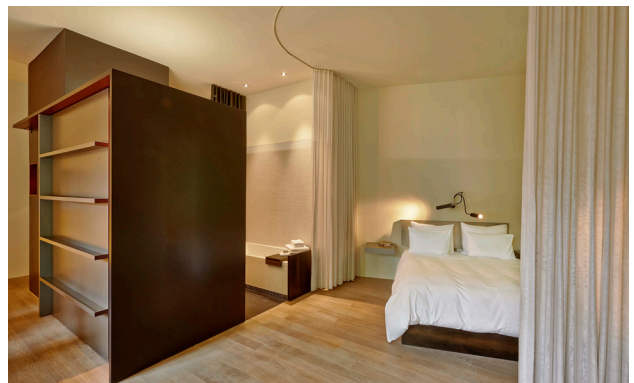
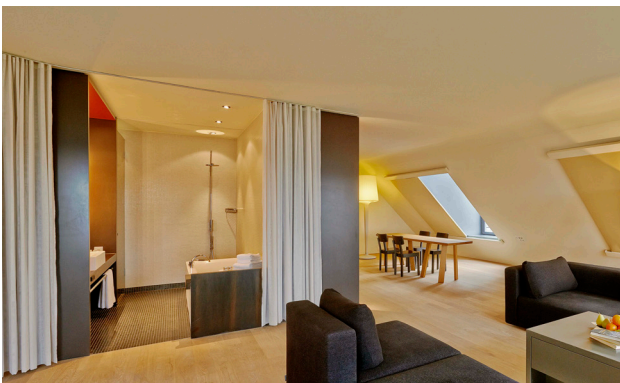
Germaniastrasse 99, 8044 Zürich  
T +41 43 255 15 70  
rigiblick@sorellhotels.com  
sorellhotels.com/rigiblick

*A member of ZFV*

**SORELL**  
HOTELS SWITZERLAND

# IMPRESSIONS

## RIGIBLICK



### **SORELL HOTEL RIGIBLICK**

Germaniastrasse 99, 8044 Zürich

T +41 43 255 15 70

[rigiblick@sorellhotels.com](mailto:rigiblick@sorellhotels.com)

[sorellhotels.com/rigiblick](https://sorellhotels.com/rigiblick)

*A member of ZFV*

**SORELL**  
HOTELS SWITZERLAND