

# LONG STAY

## PARTNER RATES

### COMFORT AND FASHION IN THE MIDDLE OF THE TEXTILE CITY

In the heart of St. Gallen, the Sorell Hotel City Weissenstein welcomes you with a large, homely lobby, 32 boutique rooms (22 bis 35 m<sup>2</sup>) and a creative workshop room. The location, just a few minutes' walk from the central train station and St. Gallen's main attractions as well as the large and homely furnished rooms, some even with kitchenette, are ideal for a relaxed business trip of several weeks.

#### SUPERIOR DOUBLE ROOM

2 weeks  
3 weeks  
4 weeks

from 1'100  
from 1'600  
from 2'000

(25 to 29 m<sup>2</sup>, with kitchenette)

Prices are in CHF, including VAT, for single occupancy, excluding breakfast, without parking, with weekly cleaning.



#### SORELL HOTEL CITY WEISSENSTEIN \*\*\*\*S

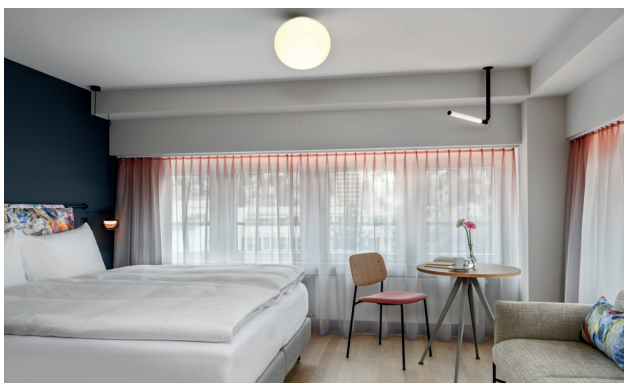
Davidstrasse 21, 9000 St. Gallen  
T +71 228 06 28  
cityweissenstein@sorellhotels.com  
sorellhotels.com/cityweissenstein

*A member of ZFV*

**SORELL**  
HOTELS SWITZERLAND

# IMPRESSIONS

## CITY WEISSENSTEIN



### SORELL HOTEL CITY WEISSENSTEIN \*\*\*\*S

Davidstrasse 21, 9000 St. Gallen  
T +71 228 06 28  
cityweissenstein@sorellhotels.com  
sorellhotels.com/cityweissenstein

*A member of ZFV*

**SORELL**  
HOTELS SWITZERLAND